

## **RESIDENTIAL ADDICTION TREATMENT AT PHOENIX SOCIETY IN SURREY BC**

### **WHAT IS LUNAR?**

LUNAR is an evidence-based, Tier 4 addiction treatment program for women located at 13670 – 94A Avenue in Surrey, across from Surrey Memorial Hospital. LUNAR supports women who are in need of residential treatment for serious substance use concerns, and is able to support women who also have concurrent disorders. The program capacity is 18 women at a time.

LUNAR stands for:

**Living  
United in  
Naturally-  
Assisted  
Recovery**

LUNAR was developed by, and is operated by, the Phoenix Society, specifically for women's treatment of substance use dependency.

### **WHAT IS STAR?**

STAR is an evidence based addiction treatment program for men based on the Bio-psychosocial and seeking safety Model. It is located at 13670 – 94A Avenue in Surrey, across from Surrey Memorial Hospital. STAR supports men who are in need of residential treatment for serious substance use concerns, and is able to support men who also have concurrent disorders. The program capacity is 15 men at a time.

STAR stands for:

**Short  
Transitional  
Access to  
Recovery**

STAR was developed by, and is operated by, the Phoenix Society, specifically for men's treatment of substance use dependency.

### **WHAT CAN YOU EXPECT AT PHOENIX?**

- Participants can expect staff to be welcoming, accepting, and non-judgmental.
- The philosophy at the Phoenix Society is positive, strengths-based, and participant-centered, with a vision of everyone thriving in strong, healthy, supportive communities.
- The focus of treatment is ultimately on healing and restoration through the development and fostering of healthy relationships, while supporting individuals to identify and build on their own unique strengths, resilience, and personal values.
- Support while in the program, individualized planning for program completion and aftercare support upon completion or leaving the program.

## **RESIDENTIAL ADDICTION TREATMENT AT PHOENIX SOCIETY IN SURREY BC**

- Following the 3 month residential treatment program, participants may apply for potential access to our on-site Transitional Housing Program. It is a 2 year program designed to empower residents to reach their recovery goals. Phoenix has 111 furnished studio-style units in a supportive learning community.

Phoenix uses a trauma-informed practice model which is reflected in all aspects of the program, the staffing model, and the overall culture.

### **WHAT SERVICES ARE OFFERED THROUGH PHOENIX?**

- Individualized counselling
- Group counselling
- Psycho-educational groups
- Relapse prevention support
- Peer support
- Medical support
- Smoking cessation support
- Job readiness training
- Skills development training
- Employment opportunities
- High school completion
- Continuing education classes
- Humanities 101
- Recreational therapy
- 3 nutritious meals daily
- Sweat Lodge
- Family program
- Appropriate referrals
- Aftercare planning/support
- Volunteer opportunities
- Access to transitional housing

### **WHAT IS THE STAFF TEAM AT PHOENIX?**

Phoenix provides an interdisciplinary and holistic approach to supporting participants and their individualized treatment goals. The support team includes:

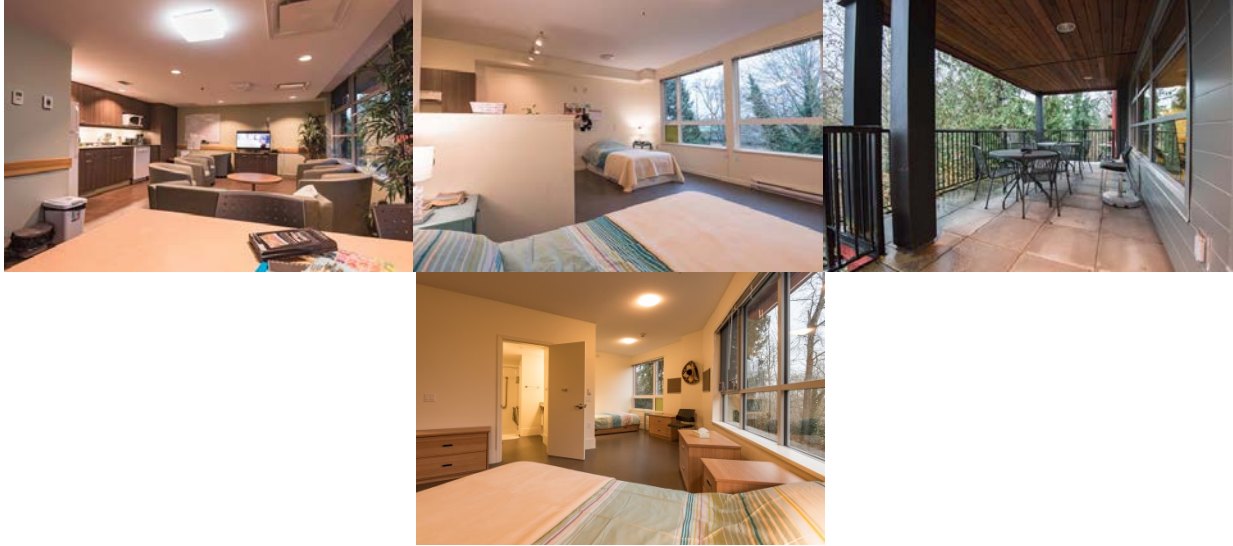
- Director of Programs
- Senior Clinician
- Nurse Practitioner
- 2 Licensed Practical Nurses
- Manager of Addictions
- 6 Counsellors
- MHSD Social Worker
- Outreach Worker
- Admissions Program Assistant
- Program Assistants
- Addictions Physician
- Recreation Therapist
- Executive Chef
- 5 ASTEP (employment )staff

### **WHAT IS THE WOMENS FACILITY LIKE?**

The LUNAR program is located on the south end of third floor of the Quibble Creek Building designed by dys Architects and opened in 2008. It is a bright and welcoming building. The north end of the floor contains 12 transitional housing suites for women. The third floor has access only for women in LUNAR or in Transitional Housing and staff.

The LUNAR section of the third floor contains 6 double occupancy rooms and two triple occupancy rooms. Each of the rooms has a bathroom. There is a group room, a counselor's office, a medication room, a laundry room, a lounge and a communal balcony.

## RESIDENTIAL ADDICTION TREATMENT AT PHOENIX SOCIETY IN SURREY BC



### WHAT IS THE MEN'S FACILITY LIKE?



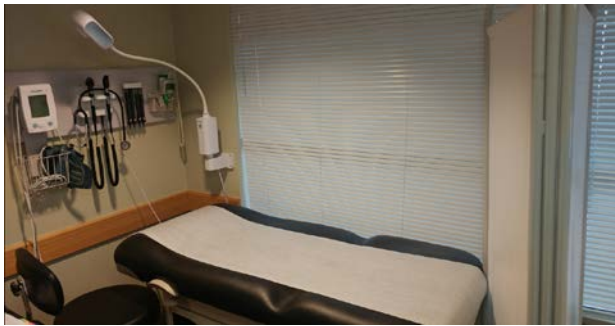
The STAR program is located on the south end of the second floor of the Quibble Creek Building designed by dys Architects and opened in 2008. It is a bright and welcoming building. The north end of the floor contains 12 transitional housing suites for men, a kitchen/dining room area.

The STAR floor contains 8 shared rooms with a total of 16 beds. There is a large group room, a counselor's office, a medication room, laundry, and a communal balcony. In total Phoenix has 83 transitional housing suites for men.

## RESIDENTIAL ADDICTION TREATMENT AT PHOENIX SOCIETY IN SURREY BC



On the second floor of Quibble Creek there is a nursing office that the treatment residents can access. The Outreach worker is located on the second floor of Quibble Creek. On the main floor of the Quibble Creek building the residents can access the Admission's office for mail and information and the Lounge - a room open to all Phoenix residents to connect with each other socially.



### WHAT IS THE PHOENIX CENTER?

Across from Quibble Creek is the Phoenix Centre which provides the dining room for treatment participants, the senior clinician's counselling office, the family visiting room, the Kwantlen education classrooms, ASTEP employment programs, EMBERS job placement resource and meeting space and recreational space.



## **RESIDENTIAL ADDICTION TREATMENT AT PHOENIX SOCIETY IN SURREY BC**

At the back of the Phoenix property is the Sweat Lodge that is operated by Aboriginal elders on Sunday's for women and men.



### **HOW TO APPLY FOR TREATMENT AT PHOENIX WITHOUT PSUTB REFERRAL?**

All applicants are required to have 3-5 days clean prior to intake. Please contact Admissions staff at [admissions@phoenixsociety.com](mailto:admissions@phoenixsociety.com) or phone 604 951-1122 ext. 1.

### **WHAT ARE THE COSTS TO ATTEND TREATMENT AT PHOENIX?**

Treatment costs do not exceed over \$1200 a month.