



# RESEARCH CHALLENGE 2021

Practice-based, patient-oriented research training program for direct care providers

## Are you a BCMHSUS direct care provider interested in research?



- Do you have a **practice-related question**, but have limited experience in research?
- Are you interested in **patient-oriented research**, but want some guidance?
- Are you enthusiastic about **applying evidence to improve clinical practice**, but are not sure where to start?
- Do you want to conduct research to **address a knowledge or practice gap** and learn more about the research process?

**Apply for a chance to receive a \$5,000 grant!**

[bcmhsus.ca/research-challenge](http://bcmhsus.ca/research-challenge)

[bcmhsus\\_research@phsa.ca](mailto:bcmhsus_research@phsa.ca)

## What is the Research Challenge?

- Participants form research teams apply for funding to conduct a small-scale practice-based, patient-oriented research study over a 12-15 month period. Teams will receive:



### Education

In literature searches, research methods, research ethics & integrity, research budget & project management



### Mentorship

To provide guidance throughout the research process

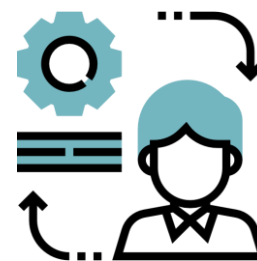


### Funding

Of up to \$5,000 to cover research costs

## Why participate in the Research Challenge?

- As a direct care provider, you may be expected to be familiar with research evidence and to apply it in your work, but **may not have the capacity, time, or resources** to engage or develop skills in research
- You can bring your clinical experience and expertise to **generate meaningful and relevant research questions to improve practice and the patient experience**
- By working in partnership with a mentor and patients to undertake research for which you are the end user allows you to **fully participate** in the **cycle of moving research into practice**



*Note. The Research Challenge will be conducted in compliance with applicable public health guidance*